



Dutchess County Industry Data:
Percentage of Reporting Units
Percentage of Average Employment
Percent of Total Wages
Average Annual Wages

<u>Summary</u>	2
<u>Industry</u>	
Agriculture, Forestry, Fishing & Hunting	3
Mining	4
Utilities	5
Construction	6
Manufacturing	7
Wholesale Trade	8
Retail Trade	9
Transportation and Warehousing	10
Information	11
Finance and Insurance	12
Real Estate and Rental and Leasing	13
Professional and Technical Services	14
Management of Companies and Enterprises	15
Administrative and Waste Services	16
Educational Services	17
Health Care and Social Assistance	18
Arts, Entertainment, and Recreation	19
Accommodation and Food Services	20
Other Services	21
Total, All Government	22
Unclassified	23

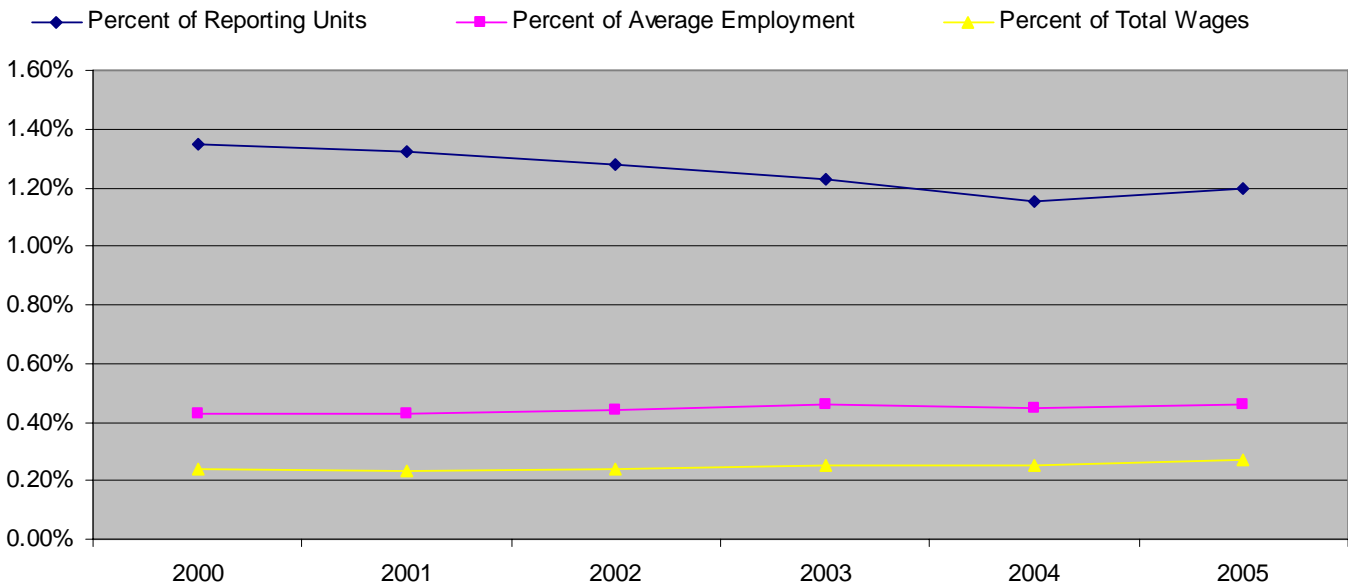
Census of Employment and Wages
NAICS Based Industry Employment and Wages
Data Source: <http://www.labor.state.ny.us/workforceindustrydata/>
Data Compiled by: the DCWIB

Last updated 4/25/07

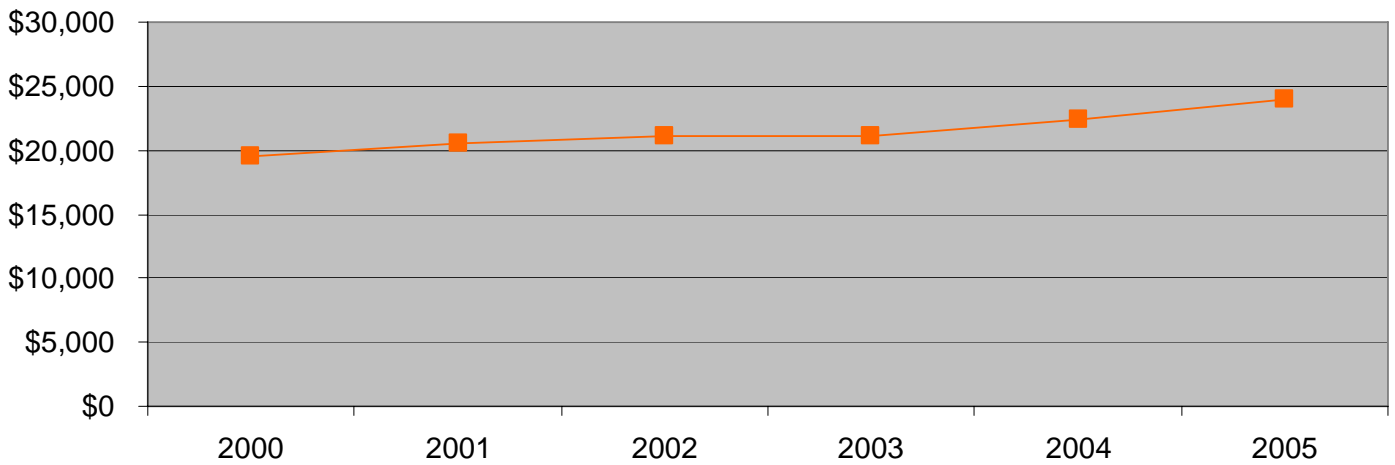
Data Summary

- Construction, Retail Trade, Professional & Technical Services, Health Care & Social Assistance and Other Services make up 54.95% of the reporting units in 2005.
- From 2000 to 2005, Utilities, Mining and Management of Companies & Enterprises have the smallest percentage of reporting units; .16%, .19% and .44% respectively for 2005.
- In 2005, 58.46% of the average employment was in Manufacturing, Retail Trade, Health Care & Social Assistance and All Government represents.
- Mining, Unclassified, Agriculture, Forestry, Fishing & Hunting and Utilities comprised 1.5% of the average employment in 2005.
- Since 2001 Manufacturing, All Government, and Health Care & Social Assistance comprises the largest percent of total wages; In 2005 it was 25.79%, 20.17% and 11.4% respectively or 57.36% total.
- In 2005 Manufacturing, Utilities and Mining had the top three highest average annual wages and Wholesale Trade was fourth.
- There was a \$26,496 difference between the highest annual salary, \$82,056 for Manufacturing and the third highest annual salary of \$55,560 for Mining in 2005.
- The lowest annual wages in 2005 were found in the Accommodation & Food Services, Arts, Entertainment, and Recreation & Agriculture, Forestry, Fishing & Hunting industries
- There was a \$67,204 difference between the lowest annual salary, \$14,852 for Accommodation & Food Services and the highest annual salary in 2005.
- Of the twenty-one listed industries, Wholesale Trade, Arts, Entertainment & Recreation and Other Services are the only three that saw lower average annual wages in 2005 than in 2000.
- Of the twenty-one listed industries, Manufacturing, Management of Companies & Enterprises, and Transportation & Warehousing saw the greatest increase of annual wages between 2000 and 2005 (a \$20,838, \$15,436, and \$13,861 increase respectively). Utilities and Finance & Insurance round out the top five with a \$10,371 and \$10,095 increase respectively.

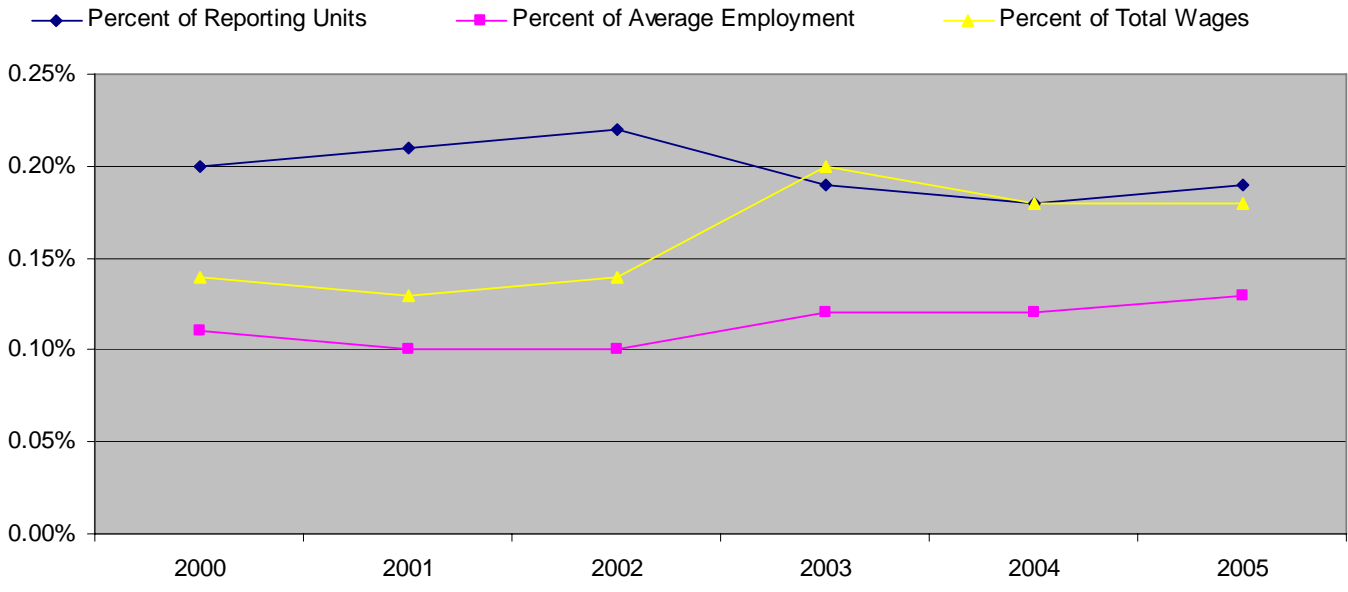
Dutchess County Industry: Agriculture, Forestry, Fishing & Hunting



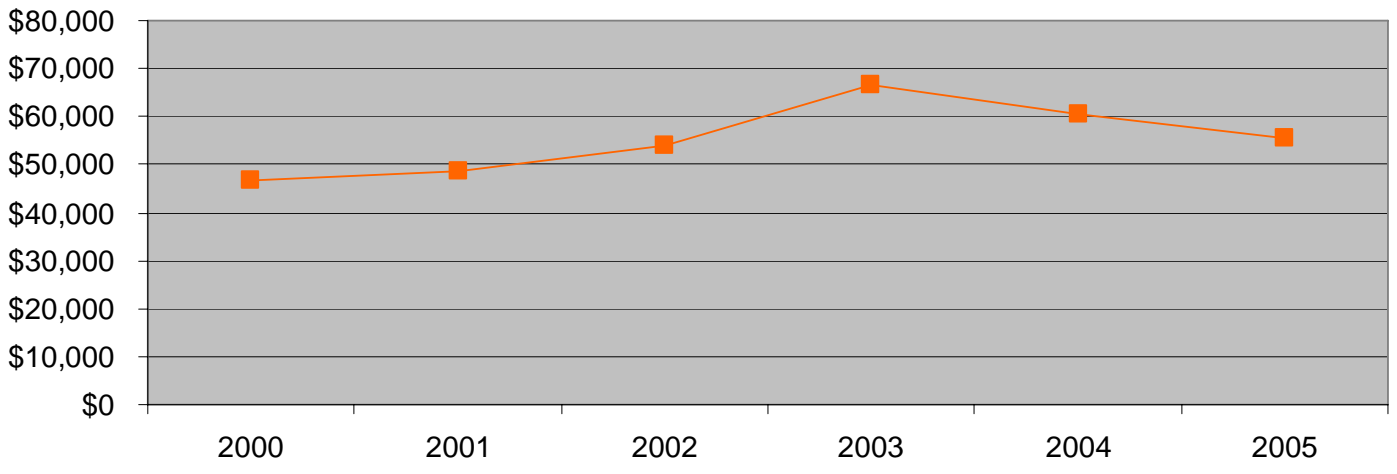
Average Annual Wages: Agriculture, Forestry, Fishing & Hunting



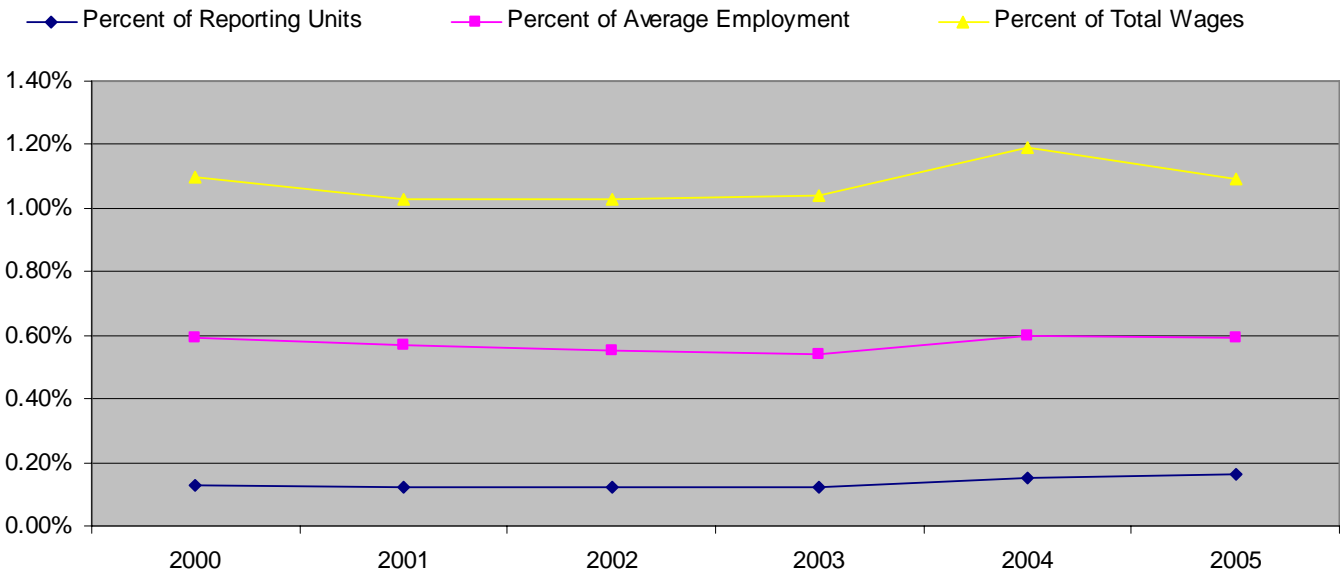
Dutchess County Industry: Mining



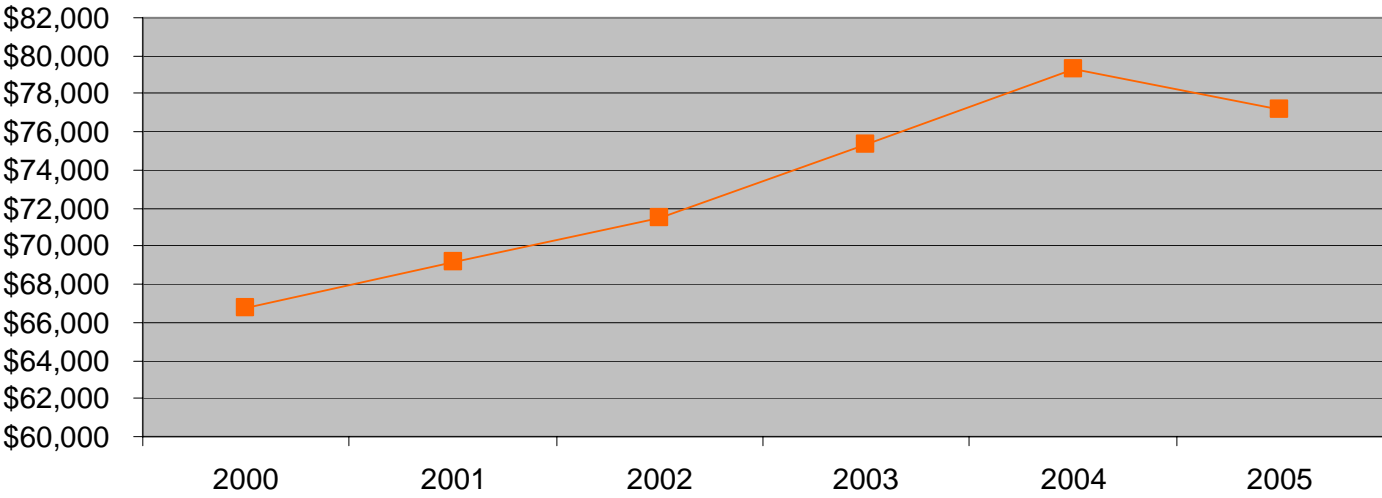
Average Annual Wages: Mining



Dutchess County Industry: Utilities

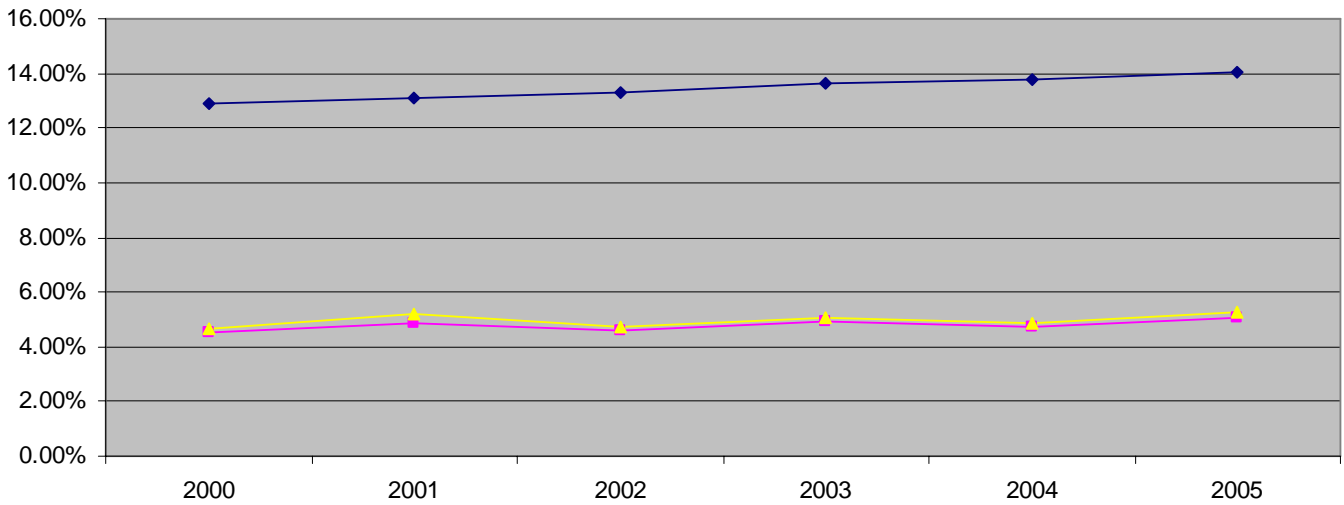


Average Annual Wages: Utilities

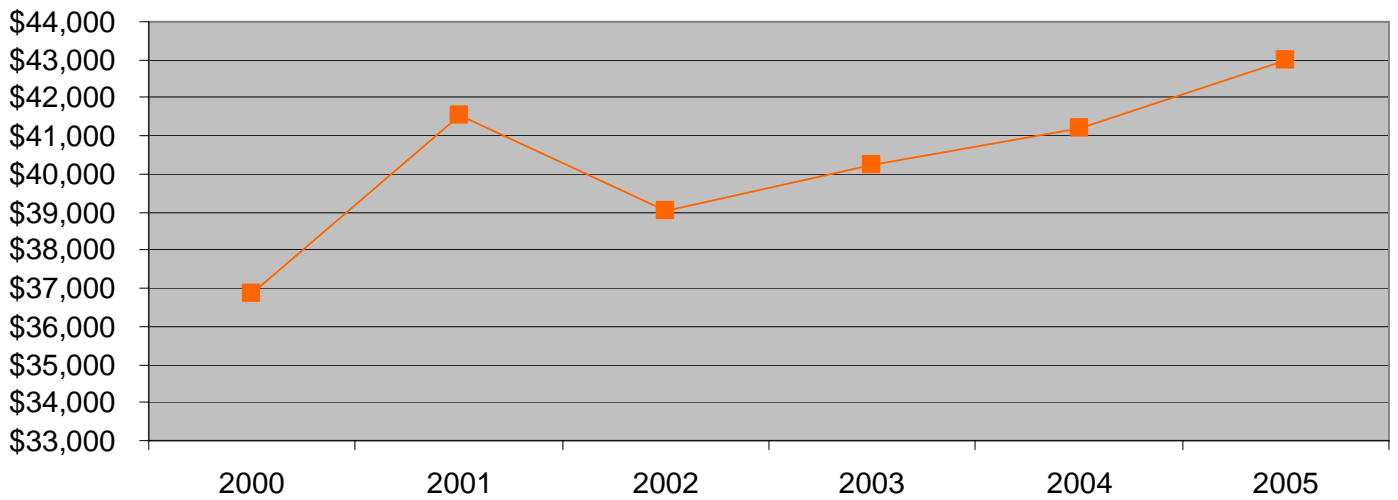


Dutchess County Industry: Construction

◆ Percent of Reporting Units ◆ Percent of Average Employment ▲ Percent of Total Wages

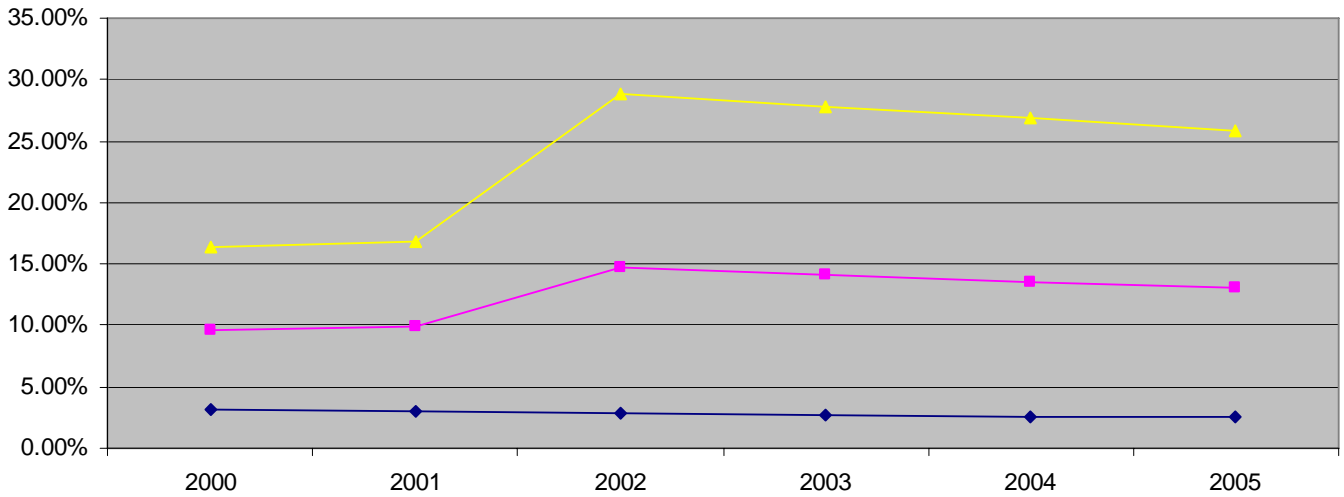


Average Annual Wages: Construction

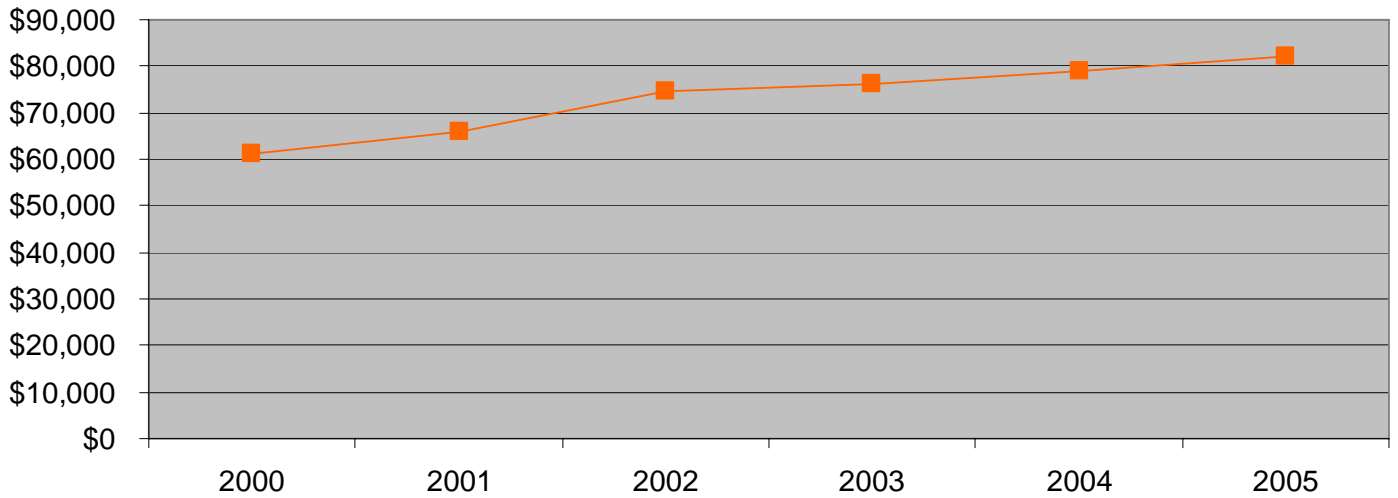


Dutchess County Industry: Manufacturing

◆ Percent of Reporting Units ■ Percent of Average Employment ▲ Percent of Total Wages

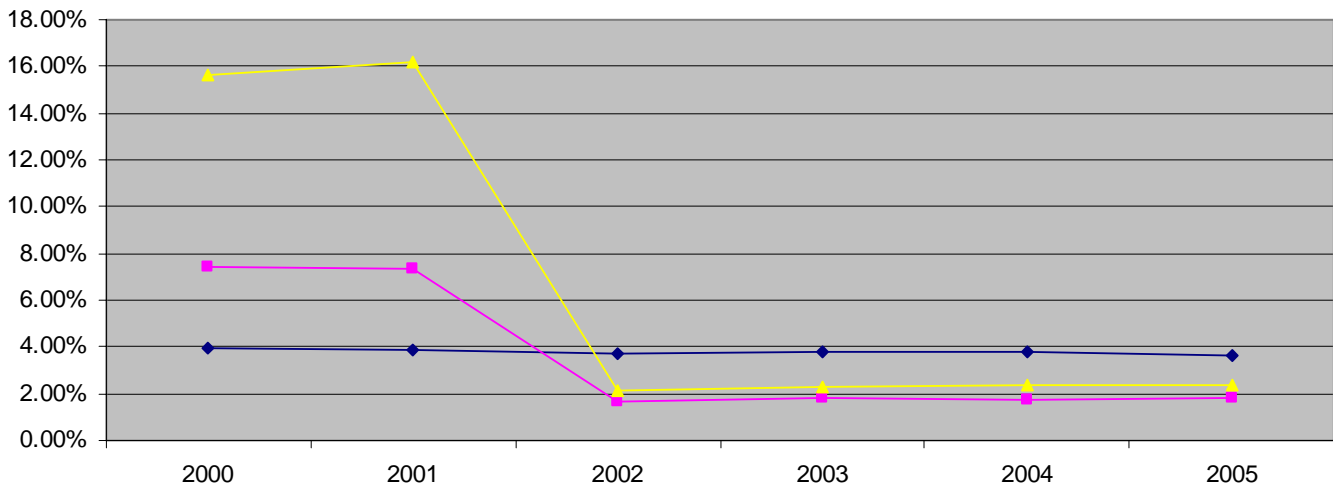


Average Annual Wages: Manufacturing

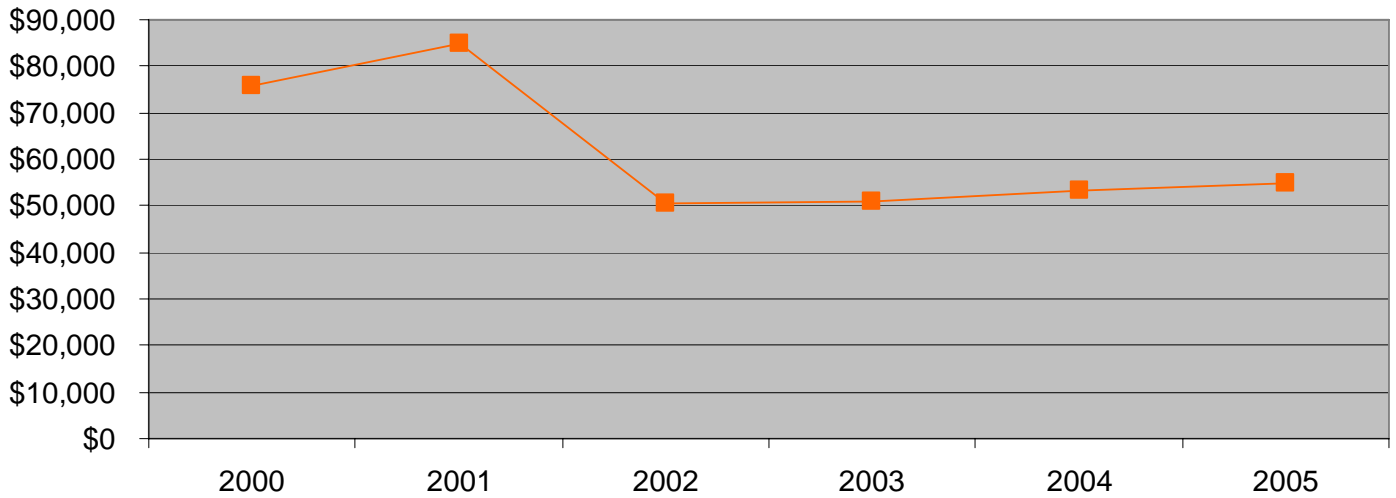


Dutchess County Industry: Wholesale Trade

◆ Percent of Reporting Units ■ Percent of Average Employment ▲ Percent of Total Wages

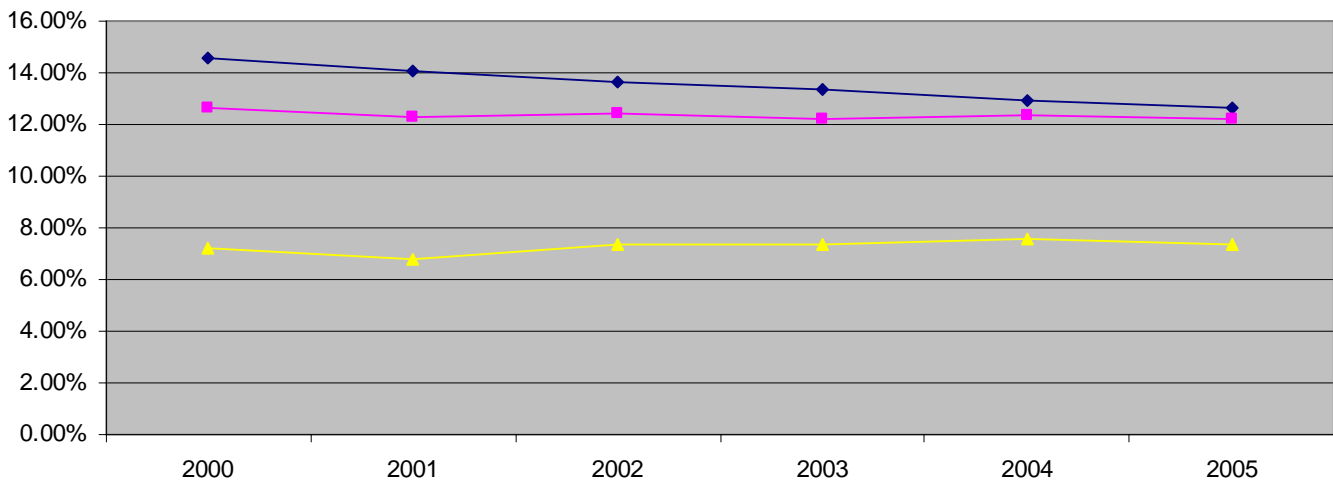


Average Annual Wages: Wholesale Trade

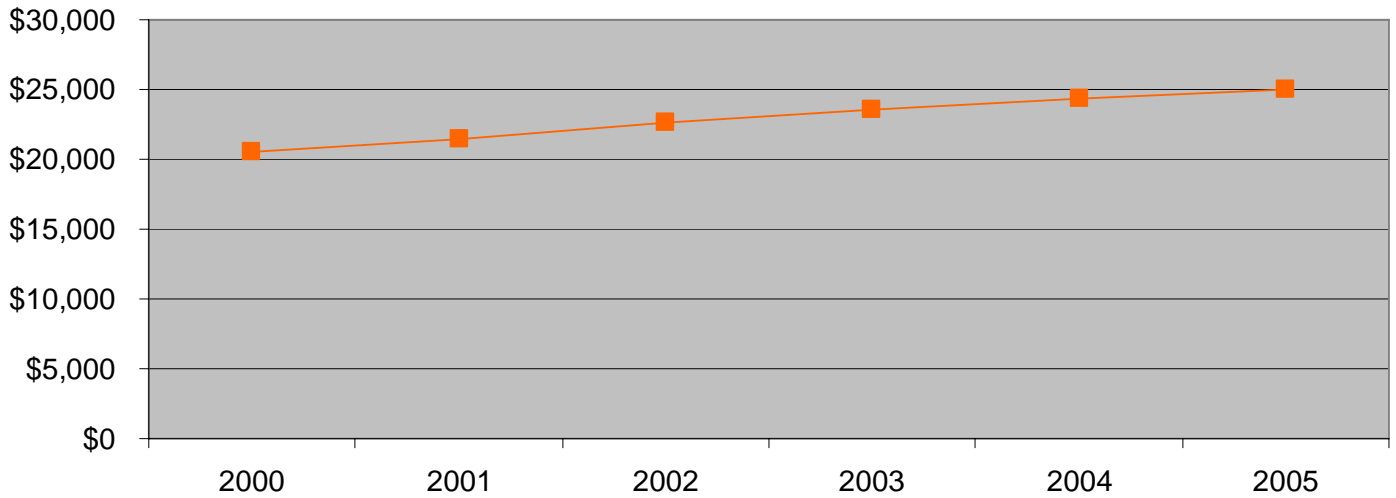


Dutchess County Industry: Retail Trade

◆ Percent of Reporting Units ■ Percent of Average Employment ▲ Percent of Total Wages

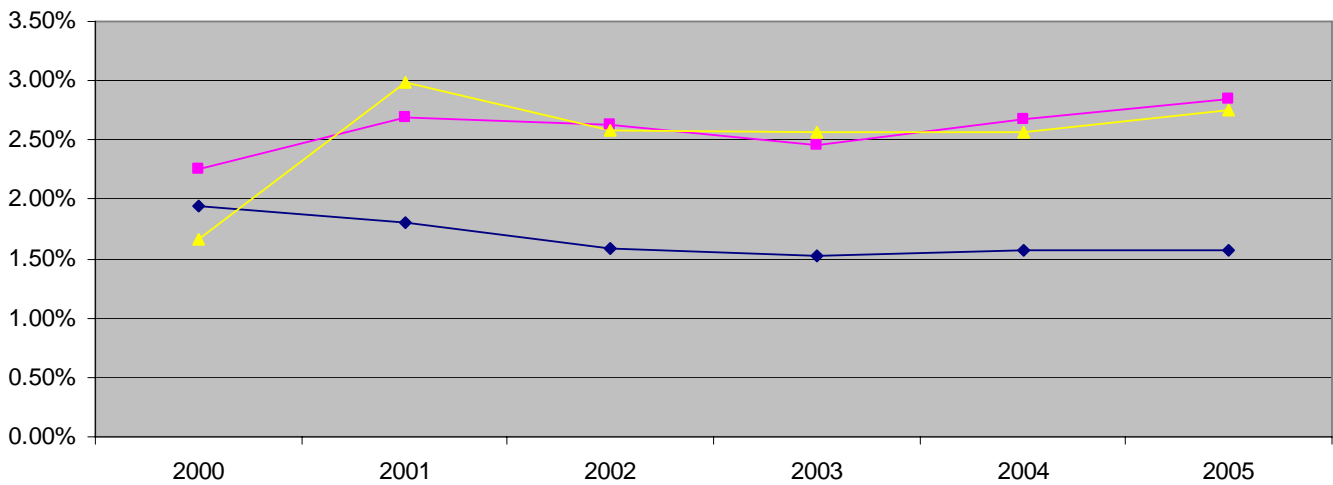


Average Annual Wages: Retail Trade

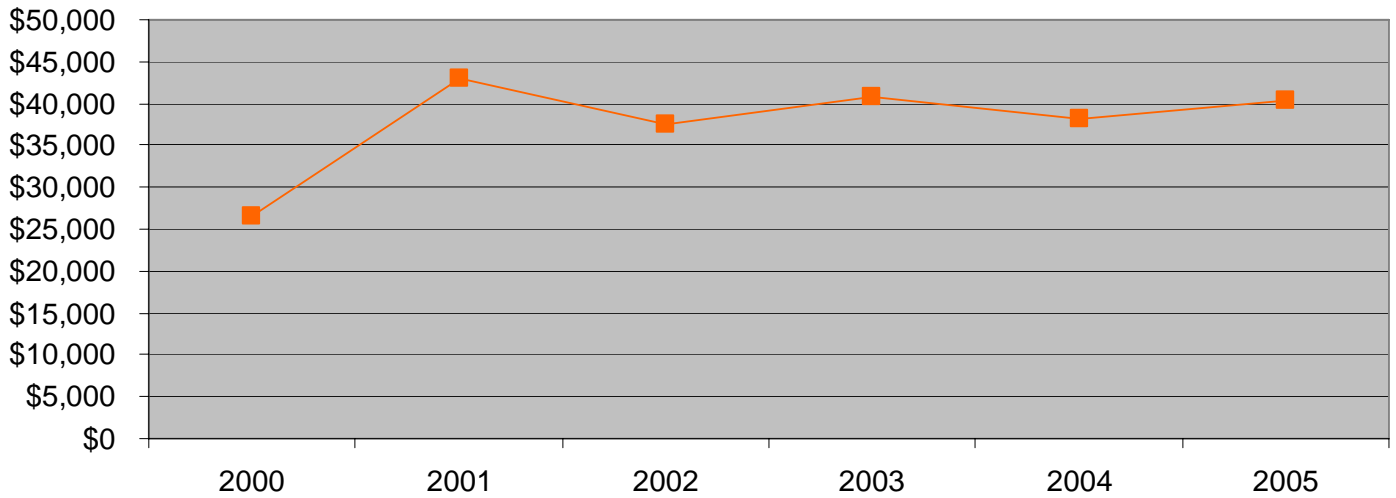


Dutchess County Industry: Transportation and Warehousing

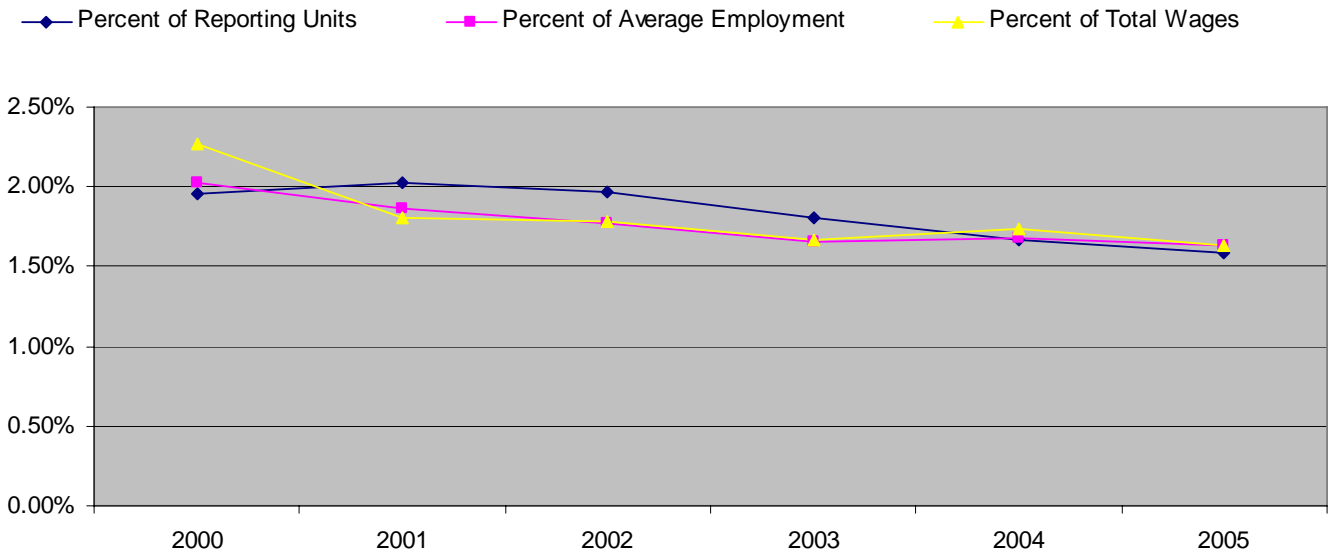
◆ Percent of Reporting Units
 ■ Percent of Average Employment
 ▲ Percent of Total Wages



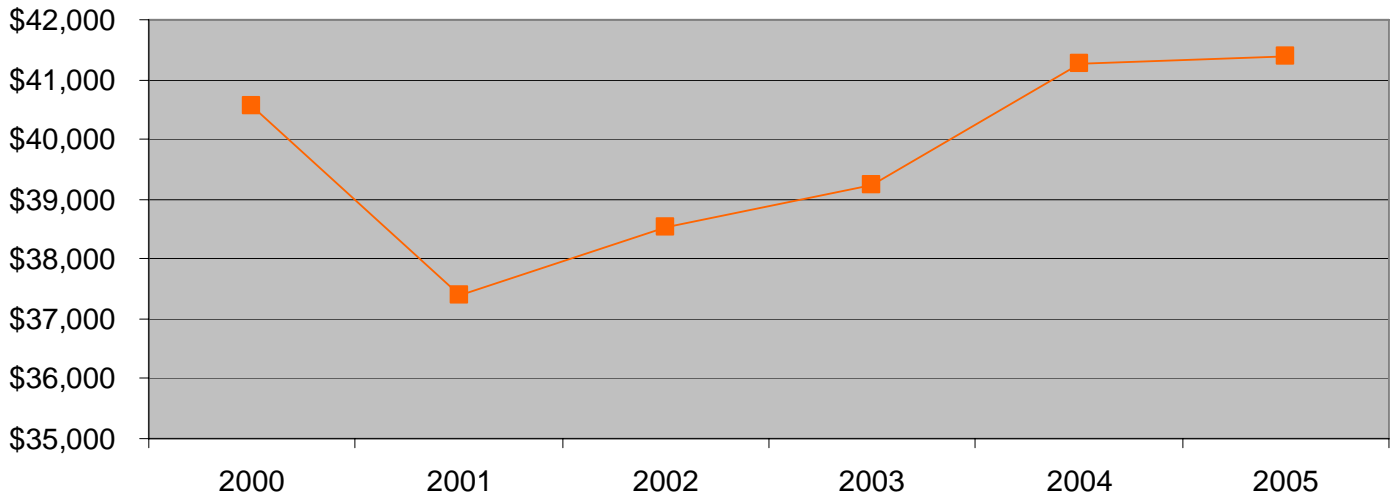
Average Annual Wages: Transportation and Warehousing



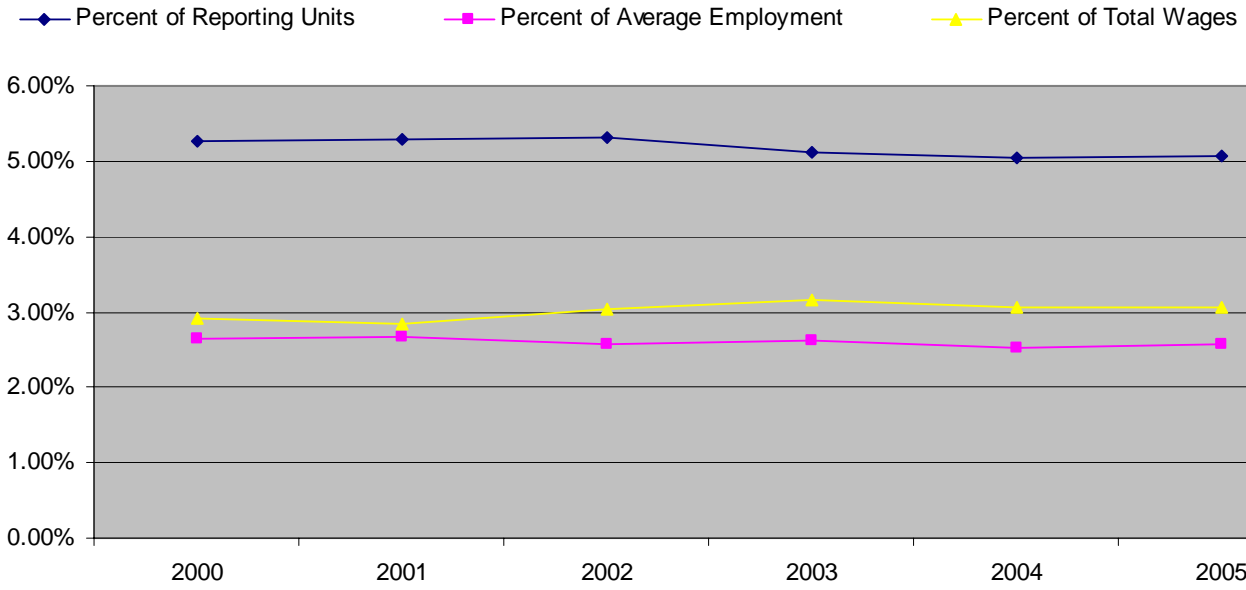
Dutchess County Industry: Information



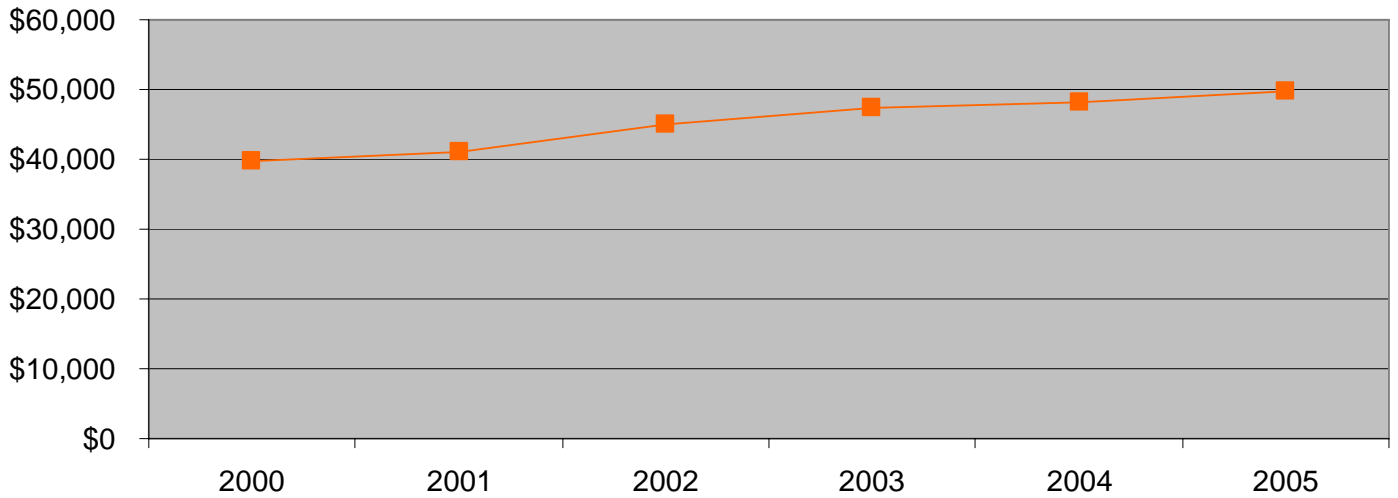
Average Annual Wages: Information



Dutchess County Industry: Finance and Insurance

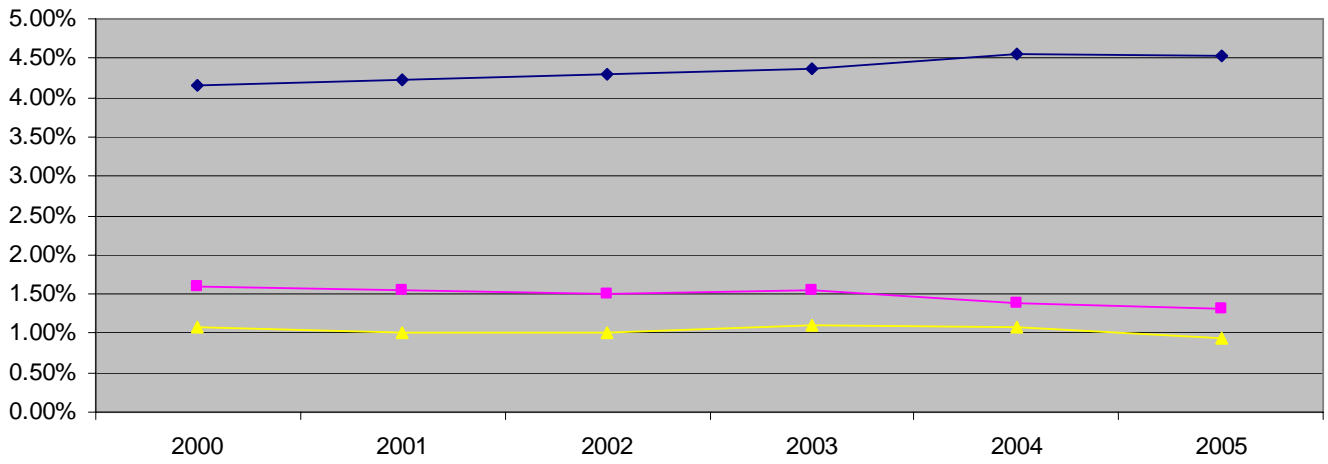


Average Annual Wages: Finance and Insurance

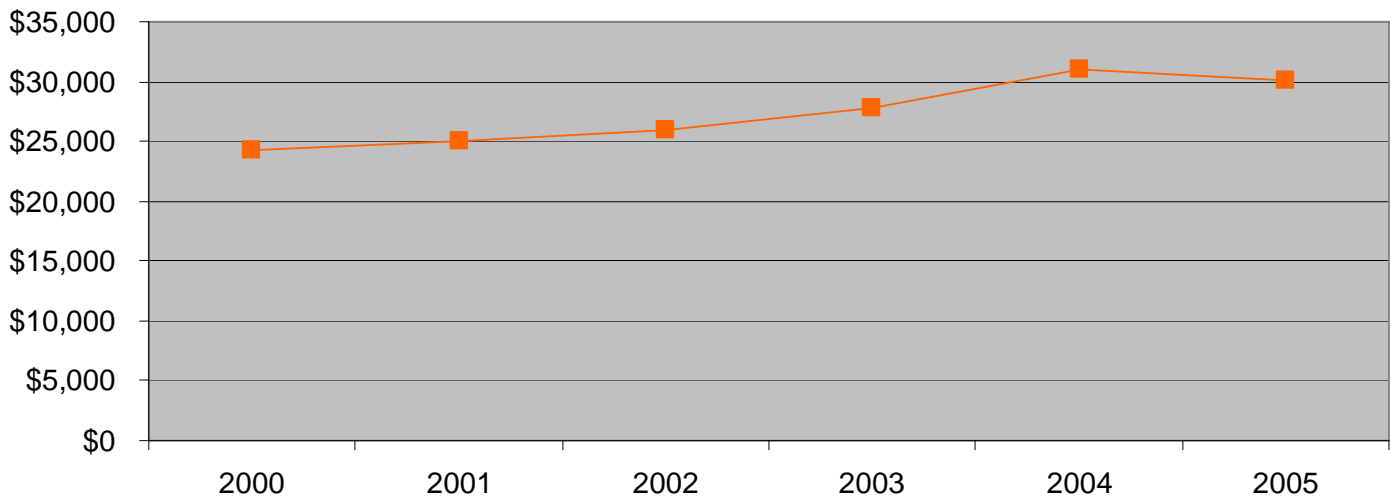


Dutchess County Industry: Real Estate, Rental and Leasing

◆ Percent of Reporting Units
 ■ Percent of Average Employment
 ▲ Percent of Total Wages

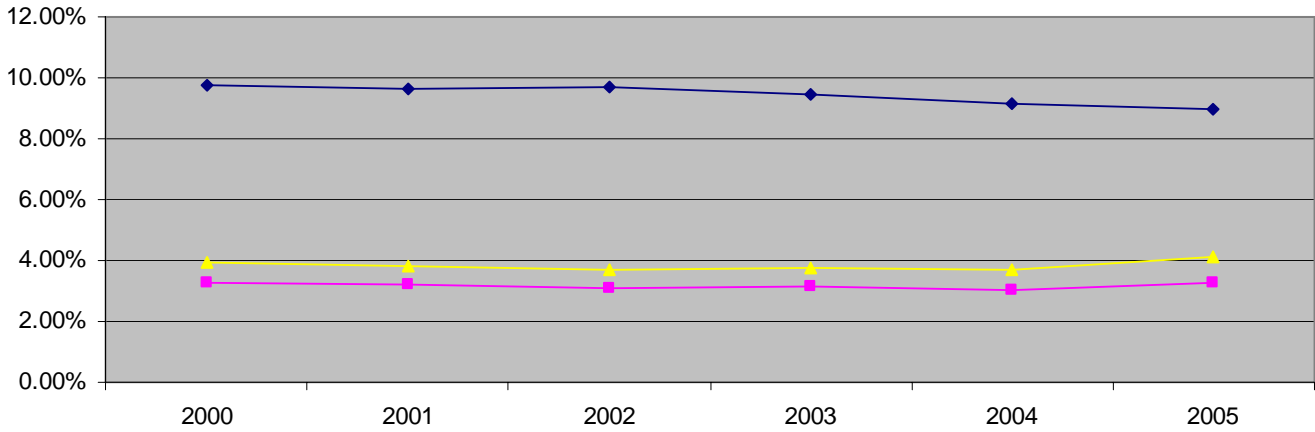


Average Annual Wages: Real Estate, Rental and Leasing

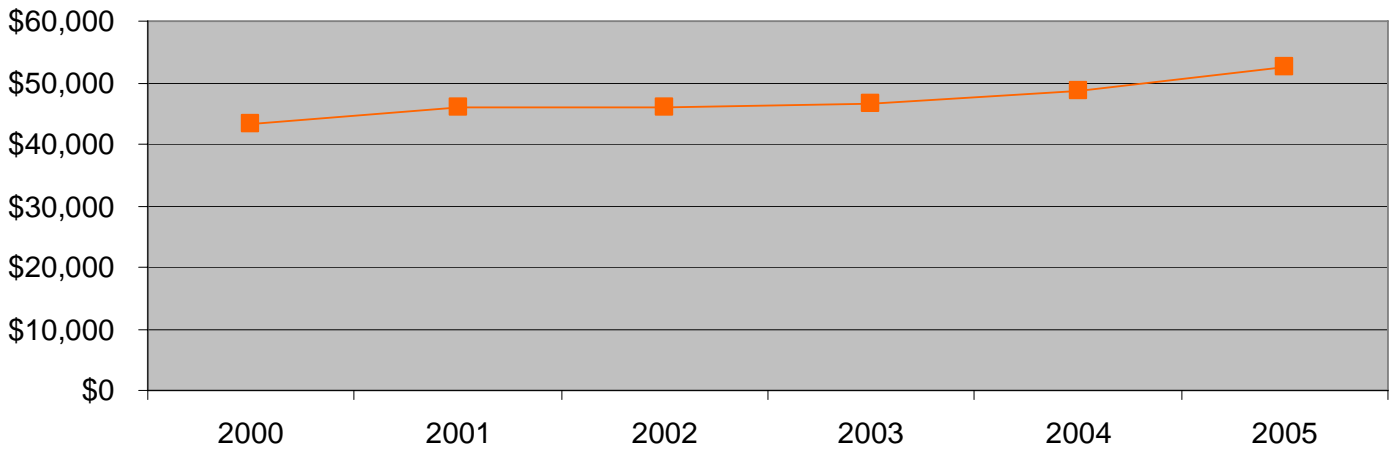


Dutchess County Industry: Professional and Technical Services

◆ Percent of Reporting Units
 ■ Percent of Average Employment
 ▲ Percent of Total Wages

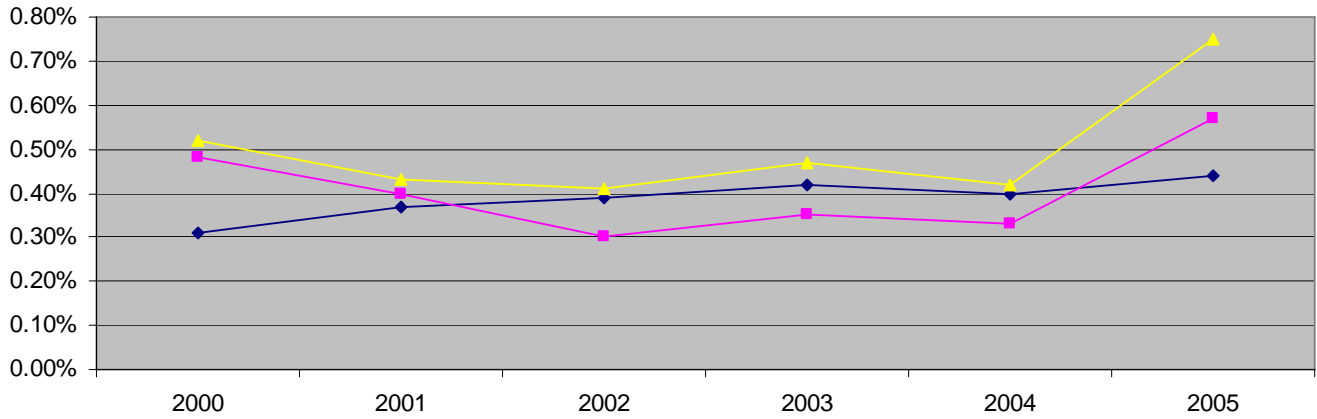


Average Annual Wages: Professional and Technical Services

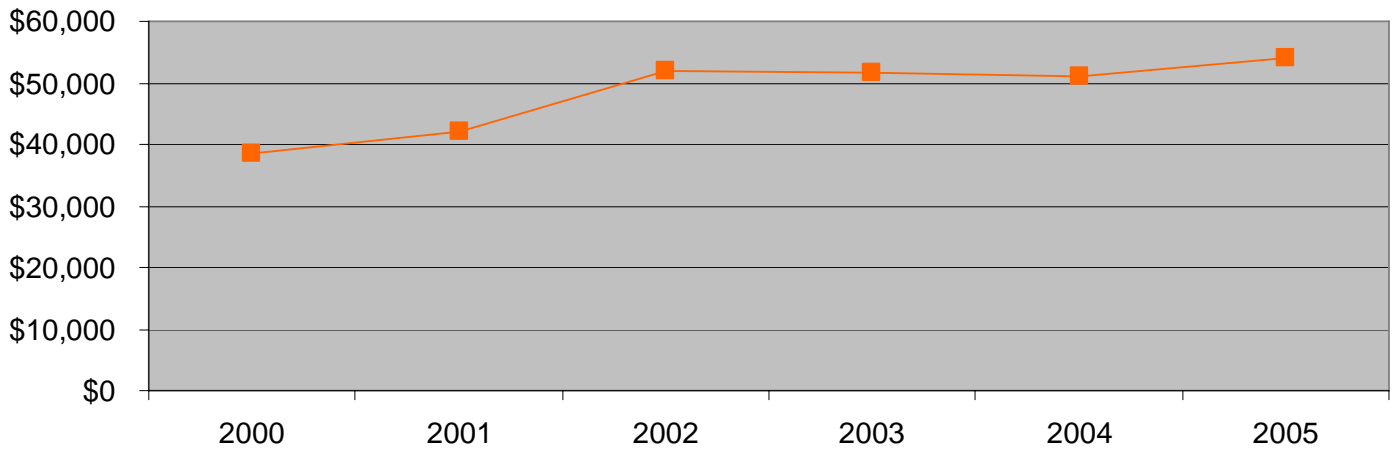


Dutchess County Industry: Management of Companies and Enterprise

◆ Percent of Reporting Units
 ■ Percent of Average Employment
 ▲ Percent of Total Wages

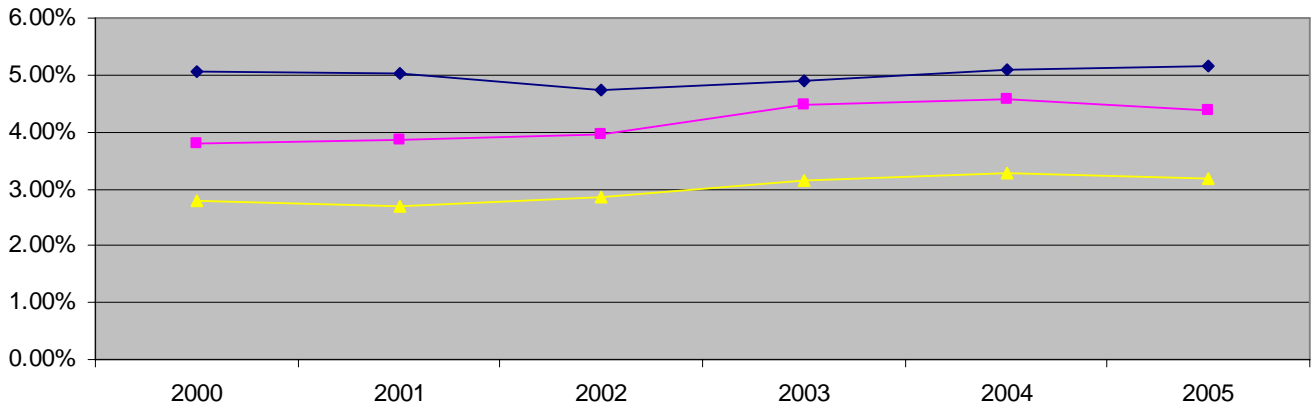


Average Annual Wages: Management of Companies and Enterprise

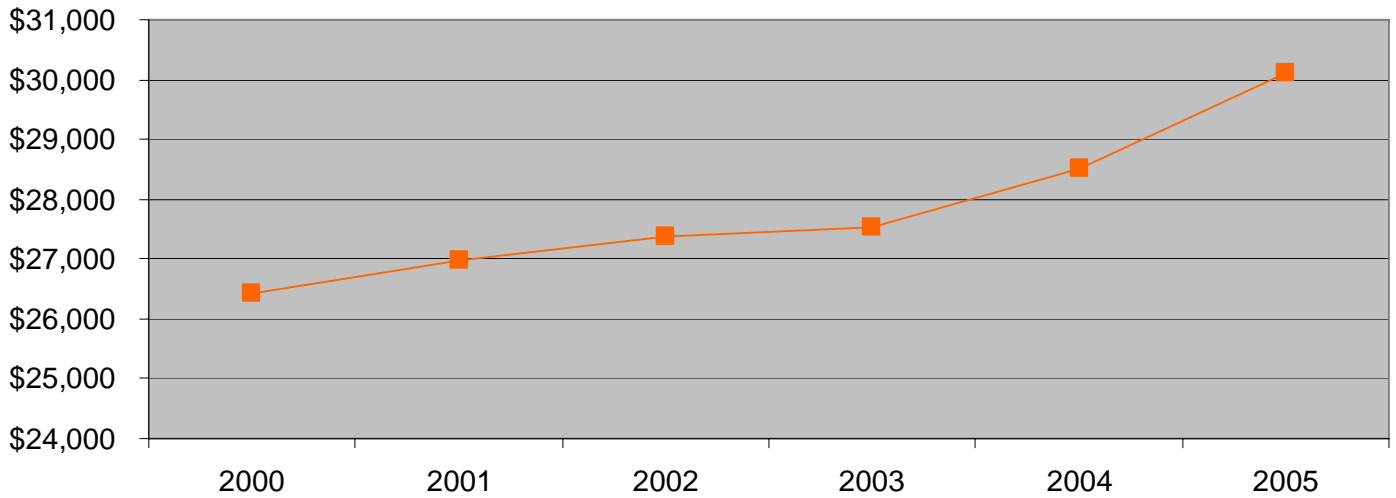


Dutchess County Industry: Administrative and Waste Services

◆ Percent of Reporting Units
 ■ Percent of Average Employment
 ▲ Percent of Total Wages

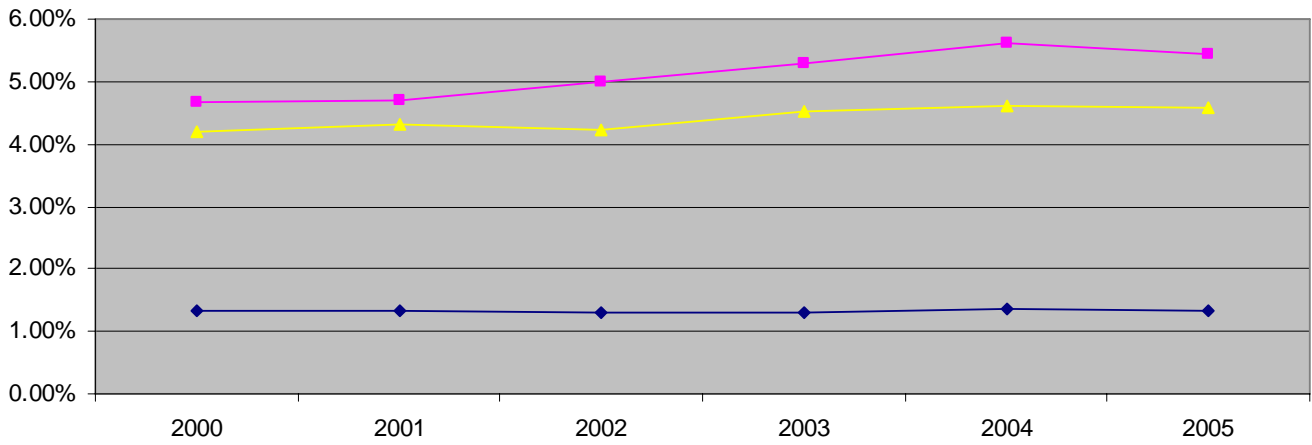


Average Annual Wages: Administrative and Waste Services

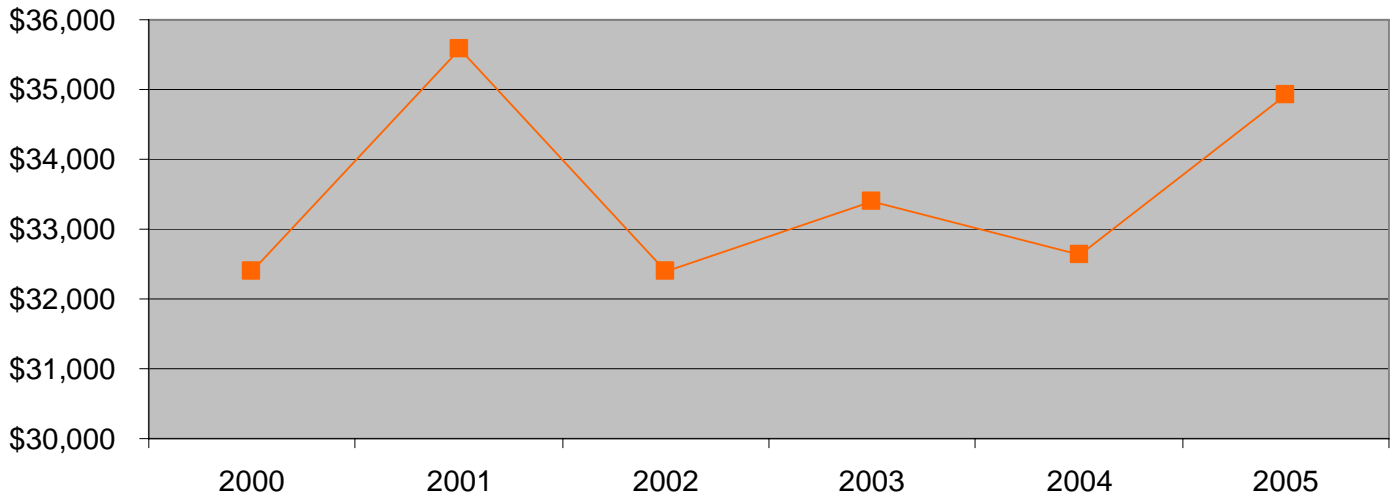


Dutchess County Industry: Educational Services

◆ Percent of Reporting Units ■ Percent of Average Employment ▲ Percent of Total Wages

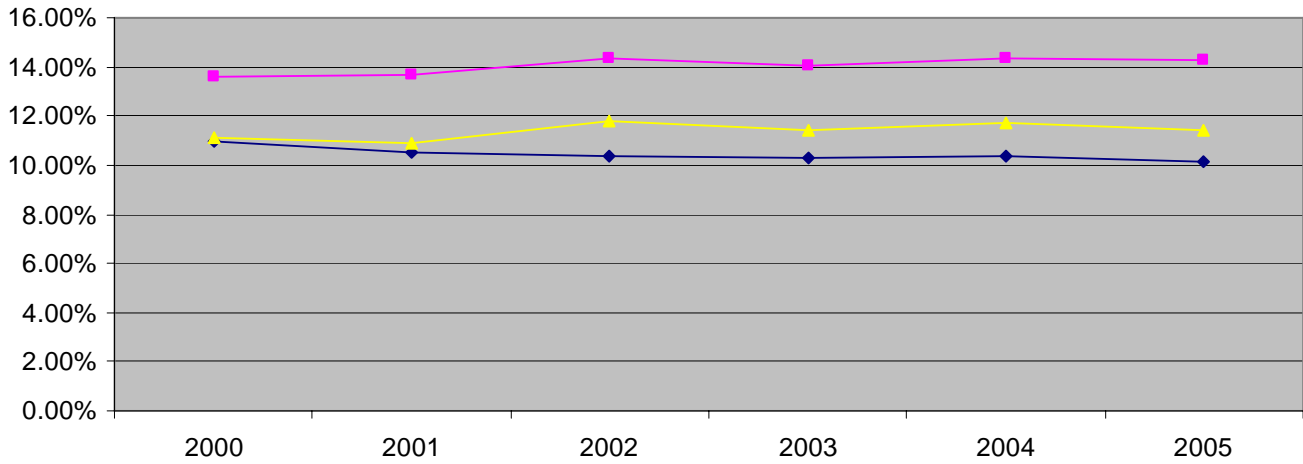


Average Annual Wages: Educational Services

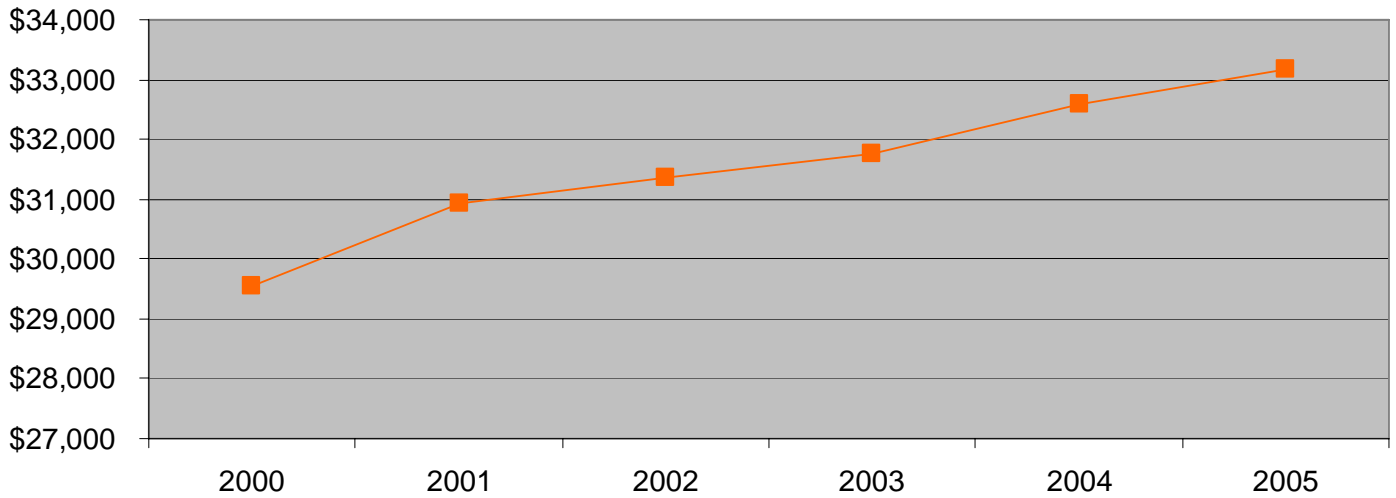


Dutchess County Industry: Health Care and Social Assistance

◆ Percent of Reporting Units
 ■ Percent of Average Employment
 ▲ Percent of Total Wages

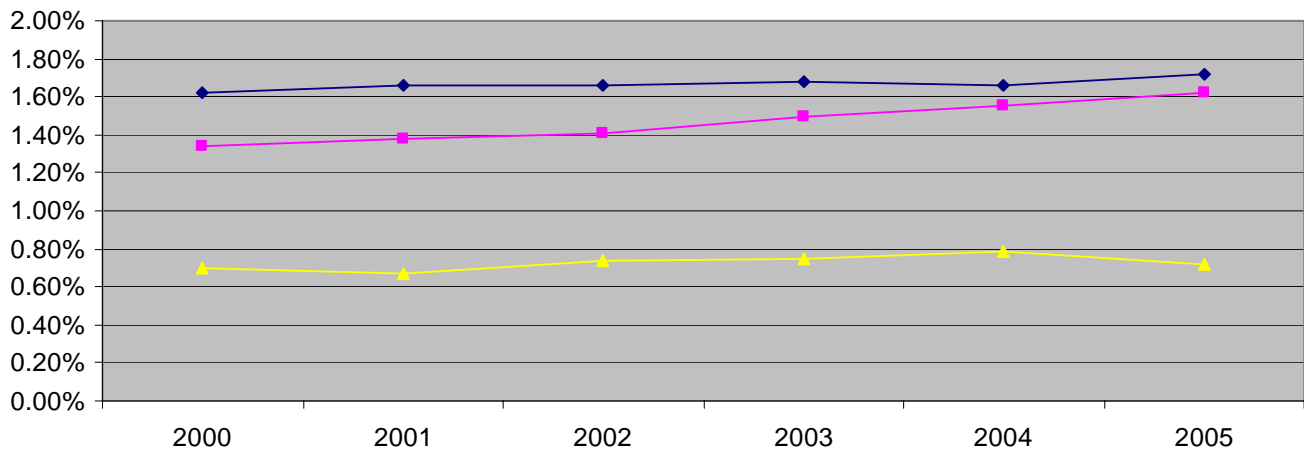


Average Annual Wages: Health Care and Social Assistance

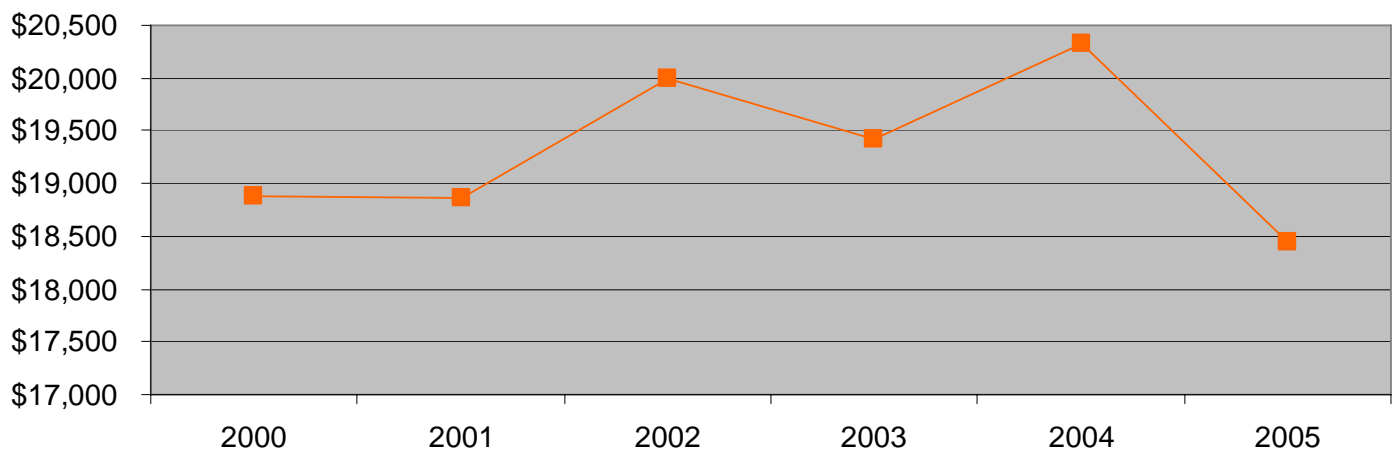


Dutchess County Industry: Arts, Entertainment and Recreation

◆ Percent of Reporting Units
 ■ Percent of Average Employment
 ▲ Percent of Total Wages

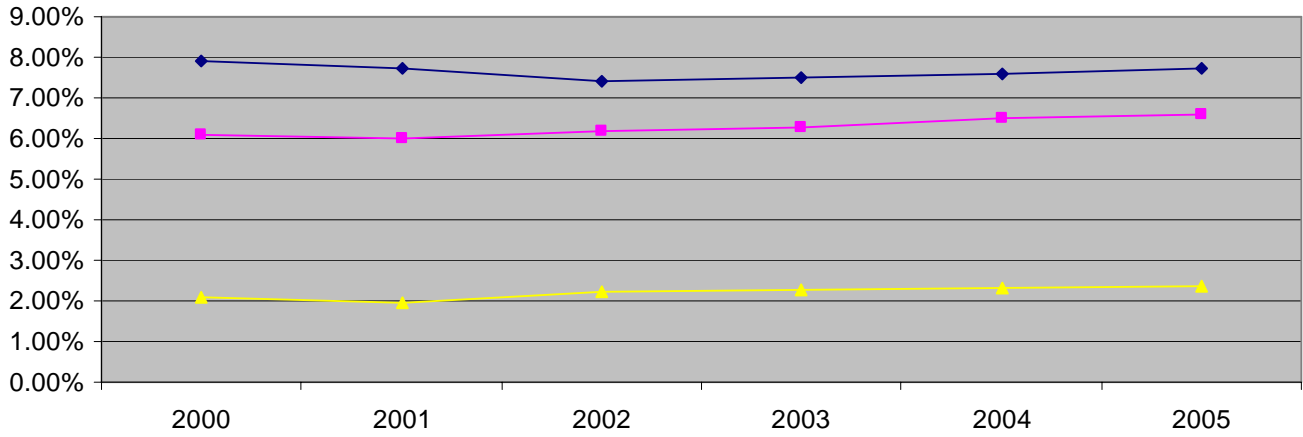


Average Annual Wages: Arts, Entertainment and Recreation

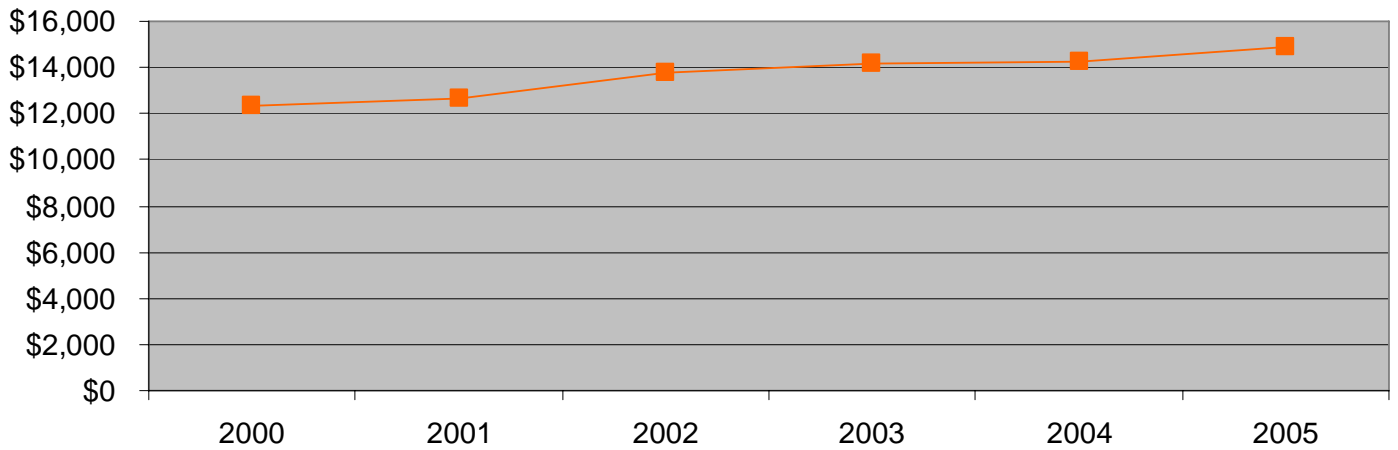


Dutchess County Industry: Accommodation and Food Services

◆ Percent of Reporting Units
 ■ Percent of Average Employment
 ▲ Percent of Total Wages

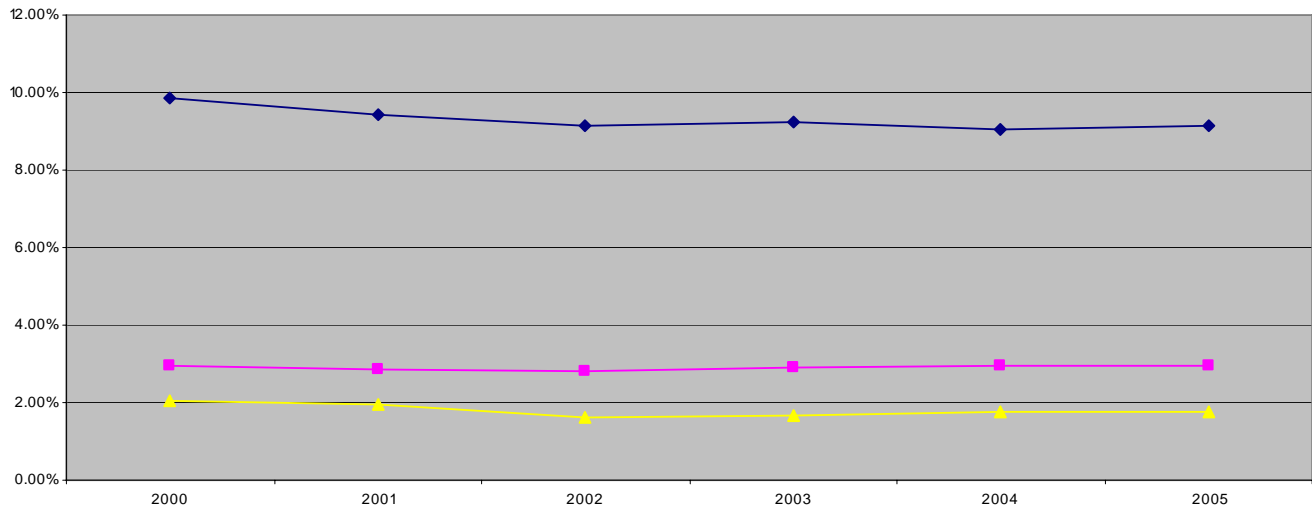


Average Annual Wages: Accommodation and Food Services

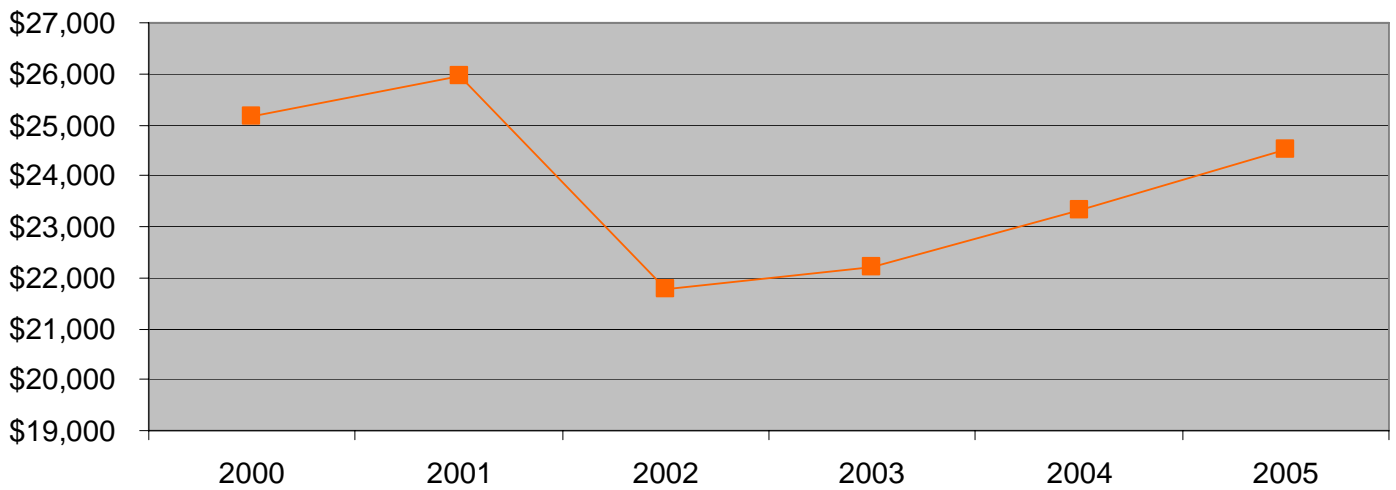


Dutchess County Industry: Other Services

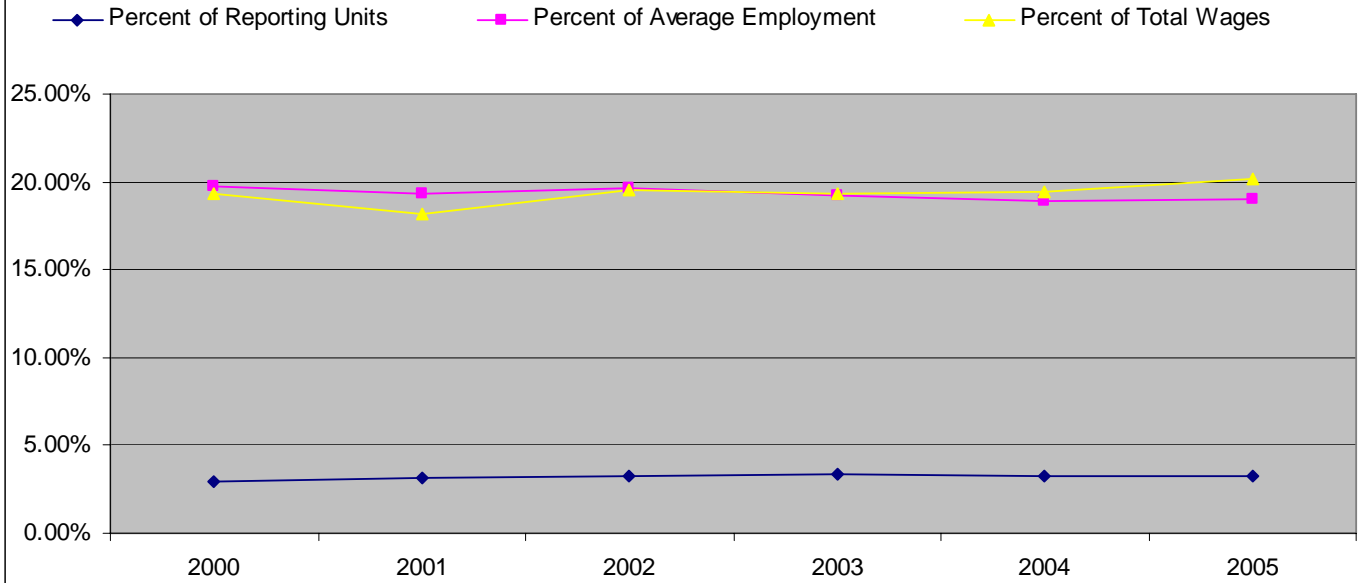
◆ Percent of Reporting Units ■ Percent of Average Employment ▲ Percent of Total Wages



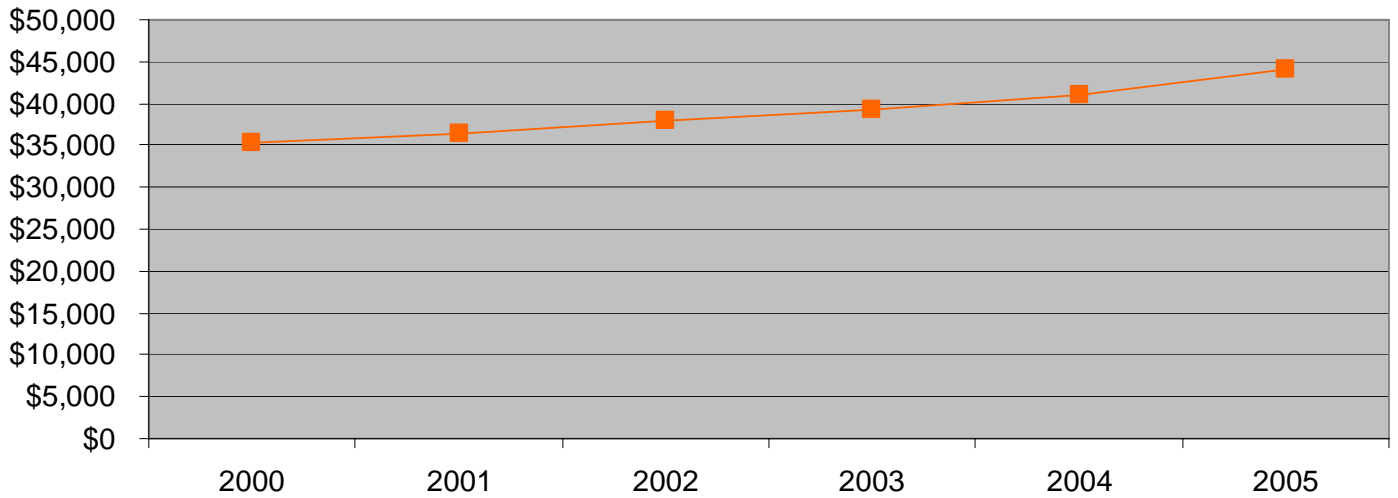
Average Annual Wages: Other Services



Dutchess County Industry: Total, All Government

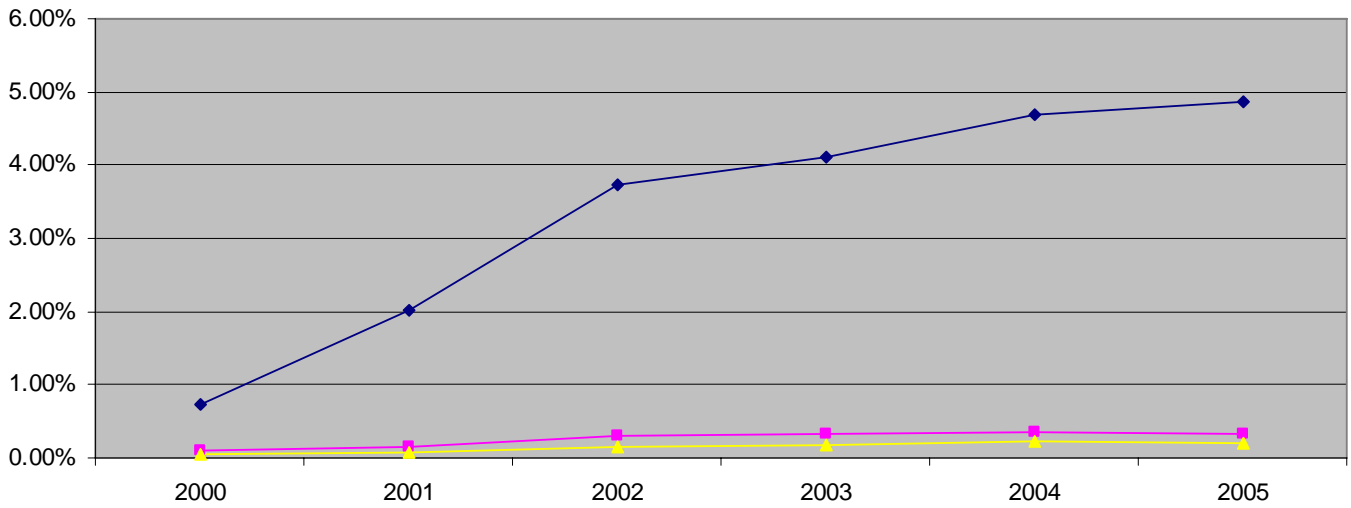


Average Annual Wages: Total, All Government

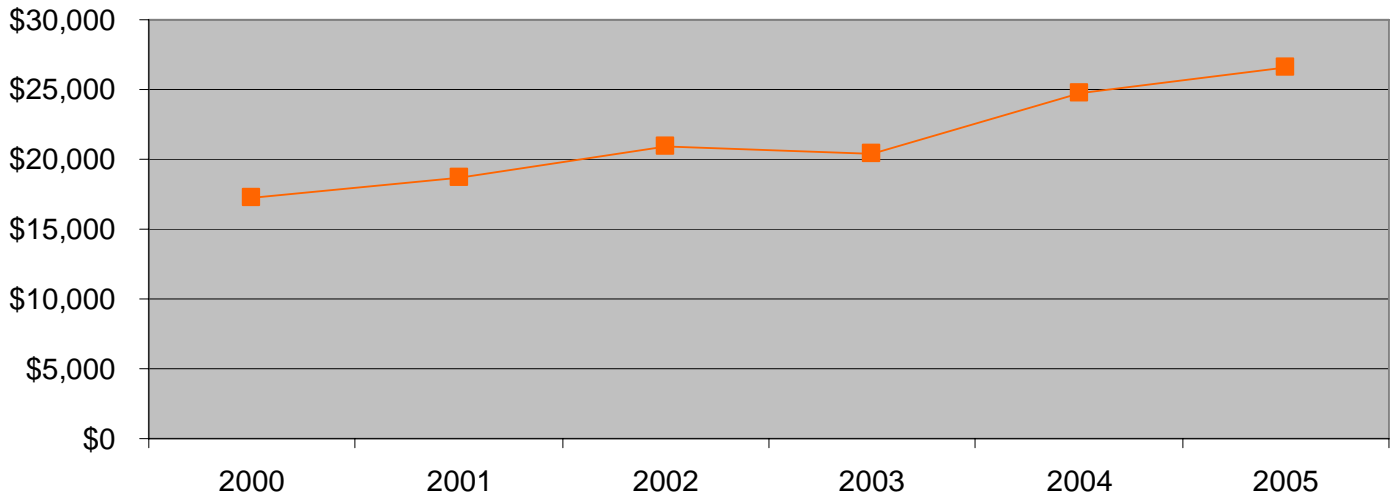


Dutchess County Industry: Unclassified

◆ Percent of Reporting Units ■ Percent of Average Employment ▲ Percent of Total Wages



Average Annual Wages: Unclassified



Workforce Investment Boards administer federal funds for job counseling and training, and are advocates for workforce issues to help employers and employees improve their competitiveness in business.

The mission of the Dutchess County Workforce Investment Board is to foster a skilled and competitive workforce by promoting an understanding of workforce trends and issues in a dynamic economy and to facilitate lifelong learning for individuals and businesses

The programs provided by this agency are partially funded by moneys received from the County of Dutchess, the New York State Workforce Investment Board and the New York State Department of Labor.

EOE/P, auxiliary aids and services are available upon request to individuals with disabilities